

LOOKING BACK 100 YEARS

MALVERN STANDARD Saturday, February 22, 1919

The Influenza.

It is satisfactory to know that the influenza outbreak is showing signs of abatement, as the number of cases reported during the past two or three days have shown a decrease. But it behoves residents to continue precautions against the spread of the epidemic. This fact has been stressed by the central authorities. To relax any safeguards that may have been enforced would probably lead to the recurrence of the outbreak, and in a more virulent form. After the many thousands of inoculations that have been performed, there has also been a marked decrease in numbers in this department during the past week. The municipal hospitals are carrying out their parts well, and it is satisfactory to know that so far there has been no necessity to over-tax the accommodation that has been provided.

If any inquisitive "flu." germ should happen to

gain access to the Prahran rate collectors' department at the Town Hall, it will only be after a struggle or a display of crafty cunning. Sheets of glass three feet high have been placed end on along the counter, and separate the public from the rate officials. Between the counter and the glass a space of two inches has been left so that money and documents can be passed through. It is not expected that the average "flu." germ will have sufficient intelligence to notice this aperture, otherwise it would crawl under while the officials were engaged in gathering in the rates! So that sense of security can be reckoned prodigious! What, it will be asked, if a sprightly "flu." germ should essay the task of jumping over the top of the glass? The answer (unofficial) is that it would come to grief. It would indeed be a crafty and cunning "flu." germ that entered the precincts of the Prahran rate collectors' department!



NEXT MEETING

General Meeting 1pm Saturday 4th April 2020

CANCELLED OWING TO CORONA VIRUS
McMullin
Will Dyson, War Artist



FROM THE PRESIDENT'S DESK

Dear Members

I would like to start on a positive note. The Annual General Meeting must take place by 17 November 2020. We will provide more details in the next newsletter.

Works have started at 21 Wattle Valley Road and it is taking shape as a park link. See photo below.

We have had a request from Council to submit names for the new Council electoral wards. There are to be a total of eleven single Councillor Wards and in the area that was the City of Nunawading area there are seven wards. Yvonne and I have been compiling a list. We have had to work with what resources we have at home, which has been tricky.

The Wednesday Working Group have been keeping in

touch via an email each week by either Kathy or me. And I think all Wednesday Workers are keen to return when it is safe to do so.

Due to the COVID-19 epidemic the Heritage Family Day will not take place this year at all.

Most of the events that I wrote in the last newsletter as coming up have, of course, not happened.

Unfortunately, our meeting on Thursday 19 March with the Council's new General Manager for Infrastructure, along with other Senior Council Managers, did not go ahead. We were to discuss issues with the garden and buildings that were identified during our Planning Day. We will reschedule in the future.

I hope you are all well and safe.

Vicki Jones Evans



CONTENTS

President's Report
A Road Not Lived In
VALE Gary Cooper OAM

	Fore! (A History of Morack Golf Club)	4
	From <i>The Reporter</i> , 1901	5
2	Is This Where You Live? – Ferguson Street, Mitcham	6
3	Diary Dates	6
3	Gold in Blackburn?	7

a road not lived in

BARKLY Terrace, a non-residential street, is between Whitehorse Road and the railway line. It starts at Mitcham Road, travels in an easterly direction before taking a sharp left-hand turn into Lee Parade and Whitehorse Road.

Sir Henry Barkly (1815-1898), our third governor, had previously been Governor of British Guiana, then Jamaica, and after six and a half years here he became Governor of Mauritius and of the Cape Colony.

Born in Highbury, Middlesex (now a north London suburb) to a West India merchant, he was educated at Bruce Castle School in Tottenham, where he became interested in both statistics and science. After his schooling he worked for his father who had several connections with the West Indies, including a family-owned estate.

Barkly was elected to the House of Commons in a by-election in

1845. In 1849 he was offered the governorship of British Guiana where he served with distinction. In 1853 he was transferred to Jamaica for three years as governor and captain-general.

In 1856 he was appointed Governor of Victoria where he achieved stability of the government. He was noted for his support of philanthropic and intellectual movements and was founder of the Royal Society of Victoria. Also, he helped found the National Gallery of Victoria, the Acclimatisation Society and the National Observatory.

His next appointment was as Governor of Mauritius and the Cape Colony, where he helped to implement good government.

Barkly died in Brompton, Kensington, London in 1898 and is buried in Brompton cemetery.

*AY Fitzmaurice
March 2020*



Sir Henry Barkly, G.C.M.G., K.C.B., Governor of Victoria (Oil on canvas by Thomas Clark, 1864).

Sources:

ND6615; en.wikipedia.org/wiki/Henry_Barkly

VALE Gary Cooper OAM

Excerpts from the Eulogy by Elwynne Kift delivered at the service.

Gary was an honourable man and a tireless community advocate over many organisations and issues. He strongly supported Clean up Australia Day and never missed one.

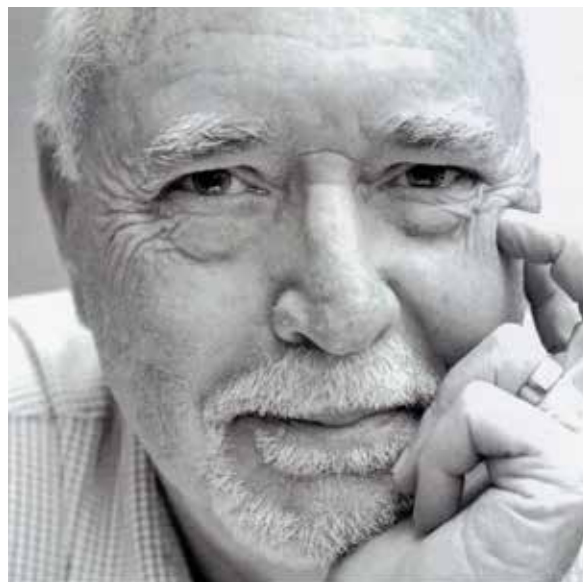
In 2004 Gary brought a Federal Politician back from his holidays to chair a public meeting which addressed the noise, dust and visual pollution along Heatherdale Road. It was the formation of the Heatherdale Community Action Group. A march was organised AND DID GARY LOVE A MEGAPHONE! WHY ARE WE MARCHING? WHEN DO WE WANT IT STOP? Now!!! Gary led them all the way.

When interviewed for the Melbourne Eastern newspaper Gary stated that the residents on the Mitcham side of Heatherdale Road fought for decency, liveability and PROPER amenity.

He was always ready to give intelligent and well thought out advice; and his ability to assess a situation – whether it be in the Community, at work, or in an organisation was exceptional. When Cyclone Tracy hit Darwin the National Bank sent Gary.

Gary was involved with 19 organisations and was awarded an OAM in 2009.

5 February 1947
– 2 March 2020



fore!

MORACK Public Golf Course is a picturesque eighteen-hole golf course that is open every day of the year, except Christmas Day and Good Friday.

HISTORY

In 1970, the area known as Morack Golf Course was rezoned from 'rural' to 'Public Open Space', thereby enabling positive planning for the golf course to begin in 1973, by which time sufficient land had been acquired by the Melbourne and Metropolitan Board of Works.

Spanning 56.66ha, when it was first opened on 8 May 1976 it was a nine-hole, par 36 course of some 2,757 metres in length. The course had been extended to fifteen holes by January 1980 and the complete 5,428 metre, par 71 eighteen holes was finished in 1981.

The water supply for the course is based upon a 50 million-litre dam constructed during 1975/78. Water is also pumped from the Dandenong Creek to maintain an adequate supply. The dam services an extensive automatic watering system designed to keep tees, greens and fairways as fresh as possible during the summer months.

Together with the billabong alongside the creek and the water feature beside the second fairway, the dam attracts a large number of water birds and all three are a feature of the course.

The land that was acquired for use as the golf course appears on the Nunawading Parish map of 1864 as section 122, which was then classed as a Reserve. The adjoining land, Lot 111 – which may also be part of the course – was a Crown Grant owned by John Lobb, a speculator from Brunswick. Thomas Graham, another speculator bought this land from Lobb. (Graham's plans for the Norwich Township and hopes for a rail line to Melbourne did not eventuate.) The land was sold again to George Augustus Goodwin, one of Blackburn's early settlers and Isaac Moore who was a tenant farmer from further afield.

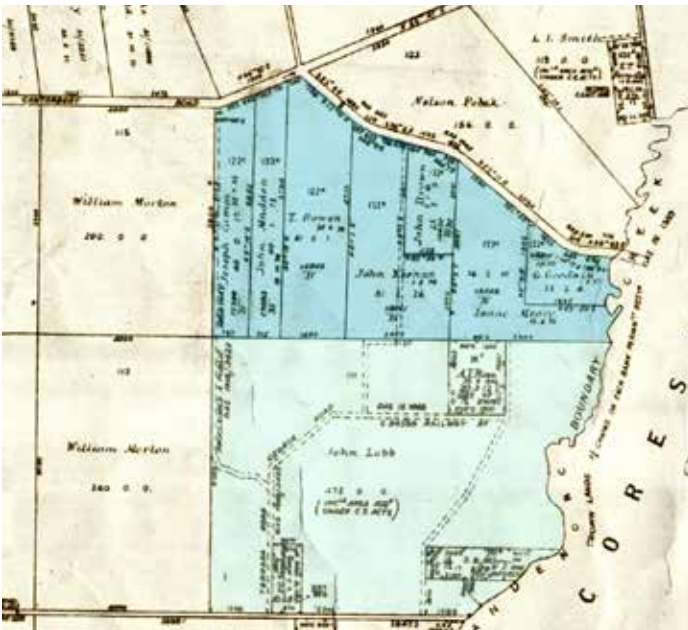
A later map of the area in 1892 shows that the land had changed hands and was again owned by speculators, one of which was a Melbourne group, the City Investment & Finance Company Ltd, that was incorporated 1 June 1888. The solicitors Davies, Price & Wighton had an authorised capital of £100,000 in £1 shares.

Except for the solicitors there was no apparent connection with other Land Boomers, although Victorian Finance Guarantee & Share Co Ltd had a few shares.

On 26 October 1892 it was decided to liquidate the company and on 22 June 1893 the liquidator reported that all properties had been mortgaged before liquidation and they had fallen in value below the amount of the loans.

Apparently all were abandoned to mortgages.

A.Y.Fitzmaurice



PICTURES: (above) detail of the 1864 Nunawading Parish Map ND884, showing Section 122 (blue) and Lot 111 (aqua); (below) NP3857 Morack Golf club c1980.



Reference and further reading:

Suburban Heartland, a history of the City of Whitehorse by Lesley Alvis. Pub: Utber & Patullo with City of Whitehorse. 2010.
Aboriginal Melbourne. The land of the Kulin people. Dr Gary Presland. Harriland Press. 1985.
WHS files. ND3330, by Keith Patterson.

(Camberwell, Surrey Hills and Box Hill News.)

THE REPORTER.

CIRCULATING IN BOX HILL, SURREY HILLS, CANTERBURY, BALWYN, CAMBERWELL, DONCASTER, BURWOOD, BLACKBURN, MITCHAM AND RINGWOOD
FERN TREE GULLY, BAYSWATER, CROYDON, MOOROOLBARK, VERMONT, EMERALD, SCORESBY, SASSAFRAS, TALLY HO, BLACK FLAT, &c.

VOL. XII. NO 49

FRIDAY JUNE 28, 1901.

ONE PENNY.

Welcome Home to Corporal Shanks, Ringwood.

A welcome home and presentation was accorded by the residents of Ringwood to Corporal George J. Shanks, on his return from South Africa with the third Victorian Contingent. The Rev. H. S. Hollow, M.A., occupied the chair. The hall was crowded, and several returned soldiers from the surrounding district occupied seats on the platform. The first part of the programme, which was entered into with much enthusiasm, consisted of the following items, the rendering of which raised the patriotic spirit to concert pitch:—Overture, Mr H. J. Rawlings; song, "The Sleeping Camp," Mr Ryan; song, "The Miller and the Maid," Mrs Peat; song, "God Bless Daddy at the War," Miss Chapman; song, "Close to the Threshold," Miss Armstrong; dance, "The Coon Song," Miss Iva Kenny; song, "Dreams," Miss Kitchen; song, "Romany Lass," Mr Timars; recitation, "The Piper of Dargai," Miss Chapman; encore, "The Queen's Gift," song, "Red, White and Blue," Mr Allen. A break was then made in the programme in the shape of a presentation to the guest of the evening. The chairman, in the course of his remarks, showed how the call to arms from England had been responded to by many a brave son, who was ready with his life to maintain the right and establish equality between man and man. They all were not able to respond to the call, various ties restrained them. Some had mothers to consider, some had fathers, some their own sisters and some others' sisters. But if they could not all respond to the call, they could at least show their loyalty by appreciating the services of those who did go out and fight for dear old England. It was with this object in view that they were gathered together that evening—to welcome home Corporal George Shanks. He therefore called that gentlemen forward. As he made his appearance he got such a welcome that he ought not soon to forget. In the following words the presentation of a handsome gold Albert and medal, suitably inscribed, was made to the returned soldier by the chairman:—"On behalf of the residents of Ringwood I have much pleasure in presenting you with a slight token of their appreciation of your loyalty and the readiness with which you served in the Boer war of 1900-1901. We welcome you back in safety. We are proud of you, everyone of us. We would the return had been a fitter one, but we trust you will abstract all commercial aspect from the token and look solely at the spirit that prompted the action. We trust it will give you as much pleasure to accept this as it has given us to present it, and, in conclusion, we sincerely trust you will be long-spared to wear this 'Ringwood's appreciation of your loyalty.'" Corporal Shanks, when the cheering and the singing of "For He's a Jolly Good Fellow" subsided, responded. He hardly knew how to thank them sufficiently for such a handsome gift. He did not know what he had done to merit such appreciation. However, this would only make the gift still more acceptable. On one occasion, as he entered Pretoria he saw the

word "Ringwood," and it not only brought back happy recollections, but it also caused him to form the resolution to uphold the honor of Ringwood. After thanking them again for their kindness, he concluded his remarks by reciting a couple of verses. The following items were then rendered with the same effect as in the first part:—Song, "Simon the Cellarer," Mr Ryan; recitation, "The Last Redoubt," Miss Iris Thornleigh; dance, "The Castinets," Miss Ivy Kenny; song, "Rocked in the Cradle of the Deep," Mr Kendall; song, "Nea," Miss Kitchen; song, "Scarlet and Blue," Mr Allen; recitation, "Lucky Jim," Mr Muldowney; song, "Summer Showers," Mrs Peat. Hearty votes of thanks were then accorded and carried by acclamation to the performers and the ladies. The national anthem concluded this part of the entertainment. The "inner man" was then refreshed at the coffee social which followed, and when this was concluded Terpsichore held sway till the early hours of morning, when the assembly broke up, after a most enjoyable evening.

Winter Evening Entertainments.

Last Saturday evening a most successful coffee social was held in the lodge room, Recreation hall, Box Hill, to inaugurate a series of winter evening entertainments to be arranged by a committee of ladies and gentlemen for the rest of the season. The chairman was Mr J. Ingamells, who by his well-known geniality of manner largely contributed to the success of the gathering. The attendance was most gratifying. The programme consisted of glee and songs by members of the Wesleyan choir under Mr H. Ingamells, with a song by Miss Jennings, who was well received, and recitations by Mr Alfred Hatfield, who received an encore, as did also Mr Amy Wise for her singing. Then came the coffee supper, and the national anthem brought a most enjoyable evening to a close, thanks being due to the Wesleyan choir for their excellent singing. The next entertainment will be held to-morrow evening, when another good programme will be presented.

The annual ball in aid of the Catholic school fund will be held in the Surrey Hall, Surrey Hills, next Wednesday evening, July 3. The committee have made splendid arrangements, and as the tickets have gone off well, there should be a large and fashionable attendance.

Next Tuesday evening there will be a grand temperance demonstration in the Federal hall, Box Hill.

Crowded Out—Report of Lillydale shire council meeting, correspondence, and other interesting matter.

"The Chandlers" will be dealt with in our next article on "Councillors I Have Met."

Municipal Elections.

Municipal representatives who retire in August next through effluxion of time are as follow:—Nunawading—Crs A. Hunter (South riding), S. McGhee (Mitcham riding), T. R. B. Morton (Blackburn riding), G. Blood (Box Hill riding), A. Rawlings (Surrey Hills riding); Doncaster—Crs F. Pickering and J. Lawford; Boroon-dara—Crs J. B. Maling (North riding), R. Beckett (Centre riding), Cr A. J. Smith (South riding); Fern Tree Gully—Crs W. Chandler (North riding), H. Monk (Centre riding), R. H. Kerr (South riding), F. G. McIntosh (East riding); Lillydale—Crs Kilpatrick (N.W. Riding), W. H. Smith (East riding) and Chandler (S.W. riding). There are bound to be changes in the personnel of the different councils, as some of the retiring members do not intend to seek re-election. In Nunawading, President Morton and Cr Hunter are likely to be returned unopposed. It is said that Cr Rawlings intends to drop out of municipal life, and Capt. Jacobs and Messrs Wise and Dunn are spoken of as likely to stand for Surrey. Cr McGhee announces in this issue that he will seek re-election for Mitcham, where his seat is threatened by Mr C. E. Husband. In Box Hill there is a feeling that a resident in the riding should occupy the seat. There is likely to be an extraordinary vacancy in the South, as it is understood that Cr Smith contemplates retirement. In Fern Tree Gully shire Cr W. Chandler intends to drop out, and Messrs A. E. Chandler and Mr W. Yeadon will probably nominate for the seat, while Cr Kerr is to be opposed by Mr C. Nobelius. In Lillydale shire Mr Ellis Jeeves will nominate for the seat vacated by Cr H. Chandler, who will not seek re-election.

MANURES

CUMING, SMITH & CO.,
Proprietary Limited.

Office: 65 William St, Melbourne.

The Oldest and Most Reliable Manufacturer of Superphosphates, Nitrate of Soda, Potash, and all Chemical Manures.

Our Bone or Nitrogenous Superphosphate, the Best and Most Reliable Manure on the Market, £5 per ton.

Florida Superphosphate, 35-38 % Soluble Phosphate, £4 15/ per ton.

Sole Agent to Gries, Sumner's Maiden Island Guano & Superphosphates.

Thomas' Phosphate Leeks (English) Brand.

Send for Pamphlets giving all information.

For Rabbit Extermination:

The Only Manufacturers of Carbon Sulphide in Australia. Phosphorized Wheat and Pollard. Agents and Manufacturers of Dixon, Gould and Co.'s Carbon Balls, for Destroying in Burrows & Under Roots & Stems. Manufacturers of Sulphuric, Nitric, Mariatic, Acetic Acids, &c.

Is this where you live?

DIARY DATES

Meetings are held at the Schwerkolt Cottage and Museum Complex

Saturday, 4 April

NOTIFICATION

Ross McMullin

All future General Meetings and Working Bees are suspended owing to the Corona Virus.

We will provide updates as the situation develops.

PICTURES: (Right) Ferguson c1930; (Below) Ferguson (centre) at Keswick Hospital, South Australia c1916.



FERGUSON STREET, MITCHAM

THIS street, close to and south of Heatherdale railway station, is situated between Purches Street and Irvine Street. It is also parallel to Forster Street and Patrick Court. It is another one in the group that are named after former Governors-General.

Sir Ronald Craufurd Munro Ferguson (1860–1934), Viscount Novar of Raith (Scotland), succeeded Denman as Governor General and held the office from 1914 to 1920, a difficult war-time appointment. He was born at Raith House, Fife, Scotland and was educated at home and at the Royal Military College, Sandhurst, after which he served in the Grenadier Guards from 1879 to 1884. Ferguson entered the English parliament as a Liberal in 1884, and held various positions. The offers of governorships of both South Australia and Victoria were refused, but he accepted the governor-generalship in 1914. His private observations on Australia were sharp and candid; he admired some aspects while deploring others.

After his return to Scotland he continued in public life. Lord Novar died 30 March 1934, and his wife, Lady Helen, died 9 April 1941.

Yvonne Fitzmaurice
March 2020

Sources:

ND6615

adb.anu.edu.au/biography/munro-ferguson-sir-ronald-crauford-7688

2020 WORKING BEES

Please make a diary note and join us on the day.

Working Bees commence at 9.30am and finish around 12 noon with morning tea.

Saturday 2 May

Saturday 4 July

Saturday 5 September

Saturday 7 November

Please come and help even if you can only offer an hour of your time.

STATISTICS

Photographs catalogued	-	4343
Artefacts catalogued	-	5000
Documents catalogued	-	7691
Museum visitors April–May		N/A



Facebook New Page 'likes' to date 851



(RIGHT): Detail of ND7353 Map, showing the area allegedly containing the mine.

"There's GOLD near that thar Lake!"

SO rang out the cry in a newspaper article in the *Eastern Times* one September in the early 1960s:

OLD GOLD MINE SITE IS FOUND

We didn't know that years ago there was a gold mine in Blackburn, but this week we learned about that interesting historical excursion of 160 girls and boys of Blackburn East State School.

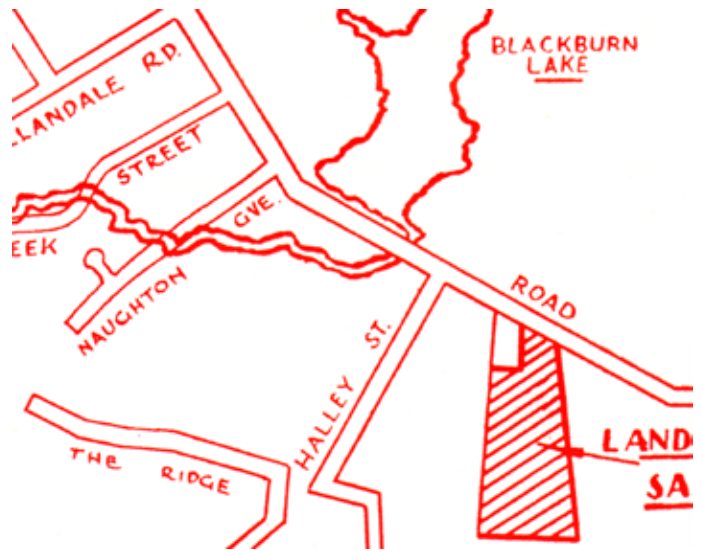
The exact site of the old gold mine in the Lake Road-Halley Street area of Blackburn was located and identified by a party of local history investigators last weekend.

The mine – its old mullock heap of sandstone, specially made water-hole, and part of its water pumping equipment remain – is in the backyard of a property on the corner of Lake Road and Dickins Street, Blackburn, owned by Mr. Ray Champion.

The mine is about 100 yards away from the site visited recently by the Blackburn East State School students on a local history excursion after the old mine was noticed on Mines Department's maps.

The true site was located last weekend after former Mayoress of Nunawading. Mrs. Joan Satchwell had sought information on the mine's history from Mr. Champion, whose family settled in the area early this Century.

Mr. Champion, of Surrey Road, Blackburn, told Mrs. Satchwell that the mine – a deep one but now filled in – was on a property which he owned. Mr. Champion said his father, the late Mr. Isaac Champion, had lled the mine in soon after settling there in 1904.



Mr. Champion told the weekend inspection party that he understood that the mine had operated successfully up to about 1880.

Presence of so much water pumping equipment indicated that its gold yield must have justified such development. It was believed that the continuous intrusion of water had finally led to its abandonment.

The mine is close to the southern end or Blackburn Lake and close to the course of Gardiner's Creek.

Sounds pretty conclusive. Or is it?

Subsequent efforts to find further information on, or evidence of, the mine have proved frustratingly unfruitful. The map referred to in the article has not been found, and indeed, a letter sent in 1986 to Dr Bill Birch, then Curator of the Department of Mineralogy and Petrology, yielded the following comment:

As for your enquiry about gold being found at Blackburn Lake, I could not find any direct reference to gold in Blackburn or Nunawading. There was a discovery in the middle of 1896 at Black Flat, just south of an hotel on the corner of Springvale and High Street Road, but this is a fair way south. Apparently however, alluvial gold was found in many gullies between Melbourne and Ringwood after 1893, so maybe the Blackburn Lake locality was in this category.

Antimony sulphide (stibnite) ores are widespread in the Silurian – Lower Devonian Sediments of the Melbourne Trough. The Ringwood deposit was the most significant in the Melbourne region, but it may have been possible for other small veins to have been found in the Blackburn – Nunawading region.

So there we have it: a disappointing outcome with a faint wisp of hope that the story is not apocryphal. Has anyone information that can take it further?

SOURCES: Research by Yvonne Fitzmaurice includes ND3749 *Eastern Times* article; ND3752 Bill Birch letter 14 February 1986; ND7353 Map; ND3748 Mineral Statistics of Victoria 1878 (gold not mentioned).

WHS Committee Contacts

President

Vicki Jones-Evans
9873 3383

Vice-President

Peter McPhee

Secretary

Kathy Innes

Treasurer

Eddie Tan

Local History Room (03) 9873 4946

Rear Museum Building
Schwerkolt Complex
2 – 10 Deep Creek Road, Mitcham

Newsletter Team

Chris Gray
Wendy Standfield

WHS website

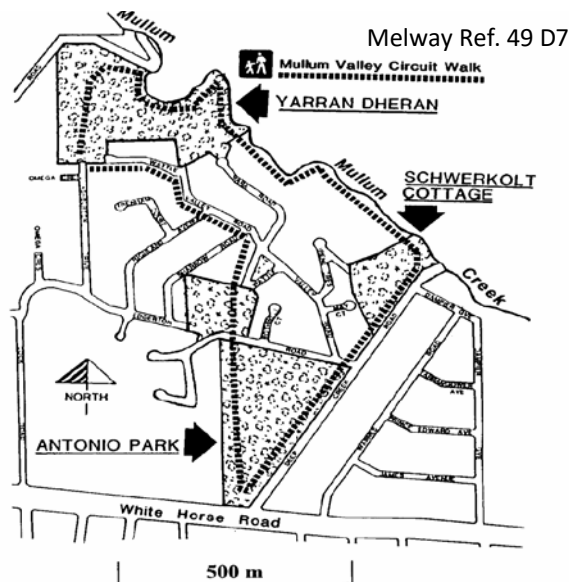
whitehorsehistory.org.au
facebook.com/whitehorsehistory

Email

whitehorsehistory@hotmail.com

Postal Address

P.O. Box 272
MITCHAM Vic 3132



Copy Deadline for next WHS Newsletter: Wednesday, 8 July 2020

The Whitehorse Historical Society Inc.

Mission Statement & Acknowledgement of Country



"The purpose of the Society is to foster historical interest and knowledge. To collect, document, research, preserve and exhibit items that show how people have lived and worked in the City of Whitehorse area."

"In the spirit of reconciliation, Whitehorse Historical Society Inc. acknowledges the Wurundjeri people as the traditional owners of the land now known as the City of Whitehorse, and pays respect to its elders past and present."

CITY OF



REMEMBER

Whitehorse Historical Society Local History Collection

Open 10.30 a.m. to 2.30 p.m. Wednesdays.
Visitors welcome.

Ring 9873 4946 for an appointment at other times.

**Box Hill Cemetery Records &
Nunawading Gazette for 1964-1974**
available on microfiche for research.

**The Whitehorse
Historical Society, Inc.
acknowledges the
support of the
City of Whitehorse.**



THE WHITEHORSE HISTORICAL SOCIETY NEWSLETTER IS PRINTED THROUGH THE COURTESY OF MICHAEL SUKKAR MP, FEDERAL MEMBER FOR DEAKIN

Sender: Whitehorse Historical Society Inc. & Schwerkolt Cottage and Museum Complex
Deep Creek Road, Mitcham, VIC 3132
If undeliverable, please return to P.O. Box 272 Mitcham, VIC 3132

AFFIX
STAMP
HERE