



NEWSLETTER

Series 31 No. 6

November–December 2023

ABN 44 352 041 634 Inc. AO 012235J

History of a Property Illustrator 1983 – 2005

HAVING trained and worked as a cartographic Draftsman from 1968–1975 within the mining industry, I easily fitted into a “work at home” job when it presented itself to me in 1983 as a pen and ink sketch artist drawing houses for the Real Estate industry within the eastern suburbs of Melbourne. The tools of trade were the same but the subject matter different.

Working from home was a perfect job to have while a busy family of three young children happened in tandem. The kitchen table was my office for most of this working time. Significantly I was able to work around school and family commitments.

Initially I worked for another artist for three months; but as I had my own contacts in Real Estate, we amicably parted company and after that I began what was to be a 22-year career in this area.

Sketches were ordered by phone initially as there were no mobile phones or computers then. I would take our two-year-old son with me to the houses when the other two boys were at school. I photographed houses with a Polaroid camera and made a “thumbnail” sketch while there. The photos were used to “scale off” a sketch in pencil and then that sketch was overlaid with drafting film and the “pen-and-ink” was completed. This process was the only one I used the entire time. Polaroid photos gave an instant usable photo. I then delivered the sketches by hand to the offices. There were deadlines each week on a Tuesday.

(continued on page 4)



49 CHURINGA AVE, MITCHAM.
PICKEN © 2003
REALTOR

**NEXT
MEETING:**

Saturday, 2 December 1.00pm General Meeting
Peter McPhee AM – Searching for a Hero



FROM THE PRESIDENT'S DESK

Dear Members,

ON Tuesday 10 October Giselda Bannister and I attended the Victorian Museums and Galleries Awards Ceremony at ACMI in Federation Square. Unfortunately, although short listed for the Volunteer-run Project of the Year category for our Visitor Centre Panels, we didn't win.

We had a very good attendance for our October meeting to hear Brian Millane's talk on the Mitcham Post Office.

Margaret Graham and I attended the play *The Hidden Orchard* at the Realm in Ringwood. Our display in the foyer was part of three cases displaying the district's orcharding history, alongside Ringwood Historical Society, Croydon Historical Society and the Heathmont History Group. Maroondah Council generously supplied the tickets for us to attend the play. The play was excellent as were the performances, and being in the Art space made you feel very included.

The display in the Nunawading Library featuring toys from our Collection looked very nice and as a result we received a donation of some toys from the Nunawading Toy Library to add to our Collection.

The Old Treasury Building's exhibition *Belongings* is opening on 18 December 2023 for 12 months. On 15 November we sent five items from our Collection to be included in the exhibition: a 1949 doll, a toy stove c1940, miniature working Singer Sewing Machine c1928, a pull-along toy horse and cat c1920 and a sewing work box.

On Saturday 18 November we welcomed members of the Blackburn North Lions to thank them for their work on the Sausage Sizzle on Heritage Family Day. They had wished to learn more about Schwerkolt Cottage so we held a talk, tour and afternoon tea for them.

At present we are in discussion with Council about reprinting Ted Arrowsmith's book *Schwerkolt Cottage and Museum*. Copies are running low and the book was a joint publication between Council and the Historical Society. We will use this opportunity to update some of the information that has come to light since it was first published in 2004.

We are continuing to receive research enquiries, mostly due to our presence on Victorian Collections.

Our last "open" Wednesday for the public will be on Wednesday 6 December. We will resume on Wednesday 10 January 2024.

Merry Christmas to you all!

Vicki Jones-Evans

We wish sadly to advise of the passing of Valma Fell, on September 11 at the age of 94 years and Frank Fell 6 weeks later on October 23 at the age of 95 years and 1 day. Frank and Valma donated a number of items to our collection, and they were honorary members of WHS.

CONTENTS

President's Report	2	Norman Armstrong, 1st Mayor of Nunawading	6
October Meeting Report	3	Is This Where You Live?	7
History of a Property Illustrator (cont. from p1)	4	From the Collection: What is this Pt 3	8
From <i>The Reporter</i> , 1902	5	Norman Armstrong (continued)	9
		Diary Dates	9

OCTOBER MEETING REPORT



ON Saturday 7 October, Brian Millane spoke about the Mitcham Post Office (as was); in particular, focussing on his time growing up in residence.

He had lots of very good photos on the screen, that were interesting because they were very clear. His mother was a photographer (and his father was too) and the photos were high quality. We saw the shopfronts in Station Street and the children playing in the back garden; we saw the shopfronts above the fence line and there were photos that were taken from the first floor of the post office building across to the north side of Whitehorse Road, where the Mitcham Road intersection was visible.

Indeed, the family sitting room was used exclusively as a photo studio, doing studio portraits and the like. Brian told an anecdote of the time when a bride was having to hide for the bridegroom was coming up the stairs to go to the studio for the photo – it was bad luck to be seen before the wedding!

There were nine children who had to share three bedrooms, which you rotated through as you got older!

There was a lot of interest and we noticed a couple of people taking photos of the screen shots because they really were good. Brian also used the architect's drawings from the collection, and a poster of the original land sale. Afterwards people were able to go and look at them.

There was an excellent turnout for the meeting, with over 30 people showing up, a number of whom were new visitors. People stayed quite a long time for afternoon tea – there was obviously a lot of discussion over the talk afterwards.

Vicki Jones-Evans and Kathy Innes

History of a Property Illustrator

(continued on page 4)

As the years went by the mobile phone, computer usage and finally being able to scan and send the sketches streamlined the process.

As well as the house sketches there were floor plans and site plans ordered, and after a few years aerial sketches also were ordered when the property needed an overall view. Today a drone photo would be used. Appointments with the vendor were needed for access if necessary.

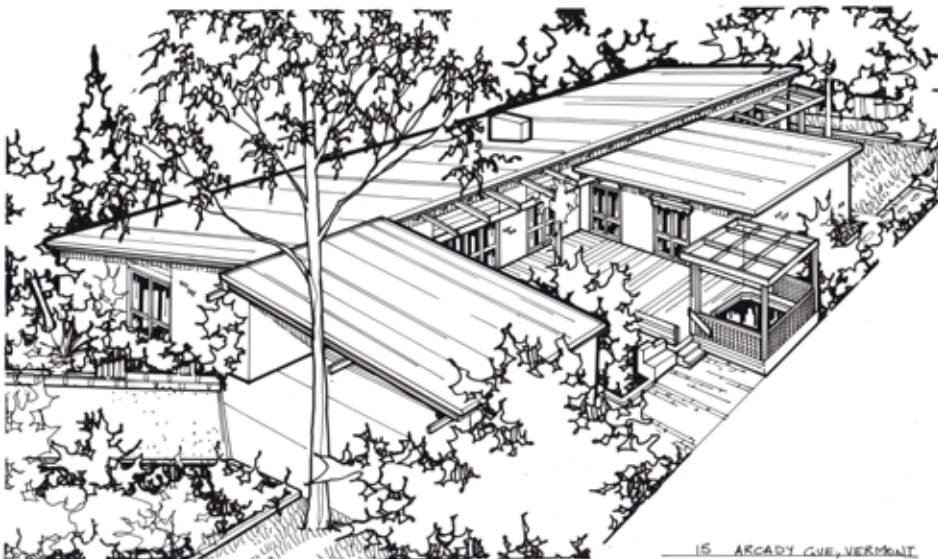
I became aware of my sketches being used multiple times in the late 1990s without recompense and sought legal opinion re copyright issues. It was confirmed to me that I owned copyright, as I was the "author" of each work. Discussing this issue with my Real Estate clients, they were immediately in agreement and allowed me to retrieve all my sketches from their archives. I am

incredibly grateful for this and as a consequence I can now gift these sketches to the local Historical Societies for their future use. As an amateur historian myself I appreciate the worth of this material for posterity.

Finally, about 2003 coloured photos began to take over the sketches and mainstream companies replaced sole traders like myself providing a one-stop shop for all advertising. I produced my last Real Estate sketches in late 2005.

Overtime I formed many great relationships with the agents, and became the preferred artist to many including Woodard's, Fletchers (Fletcher and Parker), McLaren and Argyle Partners. I view my working life during this time as an enormously busy one providing me with a most rewarding career.

Marg Picken



15 ARCADE CUE, VERMONT
MARGARET PICKEN -93
WOODARDS ~ P./BUEN



5/16 FLORENCE ST, NUNAWADING
MARGARET PICKEN -93
WOODARDS ~ C'WELL

PICTURES:
Two examples of Marg's work for Woodard's Real Estate agents.

FROM THE REPORTER.

CIRCULATING IN BOX HILL, SURREY HILLS, CANTERBURY, BALWYN, CAMBERWELL, DONCASTER, BURWOOD, BLACKBURN, MITCHAM AND RINGWOOD
FERN TREE GULLY, BAYSWATER, CROYDON, MOOROOLBARK, VERMONT, EMERALD, SCORESBY, SASSAFRAS, TALLY HO, BLACK FLAT, &c.

VOL. XIV. NO 19

FRIDAY, DECEMBER 12 1902

ONE PENNY.

SEASONABLE WORK.

(BY M.A.C.)

The Orchard.

The very hot spells of weather which were experienced during last and the previous weeks, though broken by refreshing showers, go to show that even in this pastoral locality we cannot do without our average rainfall. The past winter has been an unusually dry one, and the subsoil has not received its full complement of moisture, consequently many fruits have not been able to stand these extreme dry spells. To meet such an exigency as this many of our prominent orchardists have provided storage water for irrigation, and the benefit of such has been clearly proved to warrant the usually large outlay. At Doncaster hardly an orchard is without its water reservoir, and those of Messrs Thiele Bros., F. Petty, S. Williams, Lawford and several others have a capacity of several millions of gallons. Any good orchardist will "dam" every drop of rain, and find that it will pay him to do so; and no doubt in time, as the value and necessity of such becomes recognised, it will be a general thing on every orchard and garden. In most places the contour of the land provides facilities for excavating, and where such exists they should be availed of, even if the water has to be forced up to a "receiver" for irrigating by gravitation. The continued dry weather has seriously affected the strawberry crop, and those who have been able to supply moisture are getting good second crops, realising last week from 10d to 1/3 per lb. Cherries last week had a big "slump," and last Saturday saw a glutted market at prices fortunately only rarely experienced. This no doubt was accounted for by the earlier ripening of several varieties this season, and the tendency of growers to rush the market, while the large quantity of very inferior stuff, only deserving of the name of cherry "stones," which realised next to nothing, seriously affected the value of that of good quality. Those who tried the Sydney market were more fortunate, and last week's advices record 6/- per half case for Florence. This intercolonial trade is increasing very year, as growers

become more confident, and I contend that it is one of the most necessary steps to success. The system adopted at in some parts of America of using palings between the rows of strawberries appears a good one, as besides keeping the fruit clean it keeps the soil moist and cool, and prevents weeds from growing. It does not entail as much labor as the ordinary mulching, and once provided they are always ready for use. Gooseberries have been a fairly heavy crop this season, and exporters have been realising 3/6 to 4/- per half case, while local prices averaged from 1/3 to 2/- per half case. The "Crown Bob" is now in demand for preserving purposes, and prices of that variety are firming. Though the plum yield is reported to be very light locally, the factories have not yet made any definite advance towards determining a price. Though offers are reported at £15 per ton it is feared that prices will be far below that figure, as the yield in many districts is heavy, and the Tasmanian crop is about the average.

Recent Patents.

Mr Percy T. Hedges, patent agent Equitable building, Collins street, Melbourne, has supplied us with the following list of patent applications which he has filed recently in Victoria by various agents:—

Improved envelope —J. Honnor, Golden Cross Hotel, King street, Melbourne.

Filter and cooler —A. Lyell, Palmerston North, New Zealand.

Tension spring —J. Brown, Swanston street, Melbourne, and J. K. Henderson, A'Beckett street, Melbourne.

Boot and shoe uppers — R. Johnstone, Flinders Lane, Melbourne.

Harvester —J. L. Smith and A. B. James, Granville, N.S.W.

E. C. (W. H.) ELLINGWORTH. E. C. (W. H.) ELLINGWORTH

1902 CHRISTMAS 1902

Leather Wallets
Purses
Jewell Cases
Handkerchief Sets
Toy Books
Books for Prizes
China & Glassware
Vases, Ornaments
Electro Plate
Cutlery
Work Boxes
Writing Desks
Toys and Games
Cricket Material
Xmas Cards
New Year Cards

... NOVELTIES ...

Xmas Card Packets, a Speciality. Marvellous Variety.
* 1d, 3d, 6d, 1s, and upwards. Wonderful Value. *

Main Road, Box Hill.

Kitchen Garden.

December is the slackest time of the year as regards the sowing of seeds, yet a light sowing should be continued, at short intervals, of peas and beans. A light watering of the drills before sowing, and scattering of a dressing of stable manure before filling in will often prevent a failure. This is to be preferred to soaking the seed, which heated by the chemical manures used, too frequently rot. The pea is a less reliable summer crop than the French bean, but in cool districts, or with plenty of water and working in warm ones, good crops may be produced. All crops such as broad beans or peas, which have served their purpose, should be pulled up, as they only tend to exhaust the soil to no purpose. A few seeds of cabbage, cauliflower, beet, spinach, lettuce, radish, mustard, cress, early carrot and onion, may be sown with a fair chance of success, especially when is available.



Norman Armstrong: 'Visionary' & First Mayor of Nunawading



He first came to public notice in 1923 when advocating strongly for the establishment of the Mitcham-Vermont Community Bus Service. An active member of the Mitcham and Vermont Progress Association, he was an office bearer for many years – serving terms as President (three years), Secretary (two years), and Treasurer (five years). That same year Norman was interviewed by 3LO, speaking on the work of Progress Associations. By the time the program aired, Norman had been elected as a councillor for the Shire of Nunawading. His radio broadcast is believed to be the first radio broadcast by a municipal councillor in Victoria.

By 1925 the Shire had experienced dramatic growth in Burwood, Surrey Hills and Box Hill, outstripping Blackburn and Mitcham. Norman perceived that growth in these areas depended on detachment from Box Hill. With 'energy and foresight' Norman advocated for the new shire to be called Blackburn and Mitcham believing that this would give a greater sense of locality, arguing that Nunawading as a name was too remote. Norman made his proposal formal in March 1925 and on 30 September 1925 the formal agreement severing the Shire of Blackburn and Mitcham from the Shire of Nunawading was signed. The first council meeting of the new shire was held in Blackburn Hall, Morton Park, on 16 October 1925. The civic centre for the new shire was established in paddocks in Tunstall. (The name reverted back to Nunawading again later).

In 1926 Norman resigned having been the subject of accusations of financial profit from the sale of the shire offices. However, in 1929 he was re-elected to council. From 1929 to 1934 R.G. Menzies was the state member for Nunawading, introducing the unpopular ticket system for sustenance in 1931, which caused much argument in council over sustenance versus employment. Norman had become Secretary of the local branch of the National Federation in 1925, (later the United Australia Party). He was later a member of the State Council for the UAP prior

(Continued on page 9)

NORMAN Armstrong was born in St. Kilda in 1892 but spent his early years in Western Australia. He married Nelly May Edwards in 1915 at Christ church, Acland Street, St. Kilda, moving to Vermont in 1920 on completion of Naval service in World War One. At that time he was Secretary of the Commercial Traveller's Association and had intended to grow flowers commercially. Norman built his first home (which still stands) in Scott Street, and carted flowers to Box Hill and Camberwell markets. As this work was seasonal, Norman joined the Drake and Company Real Estate agency (est. 1914), on a part time basis until 1923, when he purchased the agency from Fred Drake. Expanding the business to a new branch in Blackburn and Mitcham, Norman was extensively involved in the Real Estate Institute of Victoria. (See WHS article: Drake Real Estate Company). However, it was Norman's civic and political involvement which dominated his life.



NP2086 Norman Armstrong opening Mitcham to Vermont Bus Service in front of Crowd. 1932-2. Joan Livermore (Mrs Nethercote) wearing Tintern School hat (in front of man with cigarette). Mrs S.D. Livermore behind Joan. Mrs Barnard next to Norman Armstrong.

BEDFORD STREET, BOX HILL

... was named after Charles Bedford, a Yorkshire man who settled here with his Irish wife Mary whom he met when working on farms in the Lilydale district. They had two daughters, Sarah and Rachel.

At the 1854 auction for the Shire of Nunawading Charles Bedford, an original Crown grantee, bought a 32-acre allotment for which he paid £11 an acre. Later, he bought a further 69 acres on the opposite side of Britnell's Road (now Middleborough Road) from Thomas Blood, an earlier settler in Box Hill.

The May 1864 issue of the *South Bourke Standard* reported that the yield of Charles Bedford's pear trees had included six pears weighing two pounds or more (approximately 1kg) each. After he had discovered that the clay-based land supported fruit trees of all kinds, he also made a name for himself when he planted cherry trees and developed the large, dark Bedford cherry.

While the Bedfords were waiting for income from the fruit trees they used the nearby vacant land and pastures along the Gardiner's creek to graze dairy cows and farm

poultry. Farming was a family business, and while Mary, Charles' wife, was responsible for the care of the poultry, their daughters, Sarah and Rachel, were expected to walk twice a week to Kew to sell the eggs and butter.

Their family home held the district's first Church of England services and remained the place of worship until 1883 when the first St Peter's Church was built in Whitehorse Road. The church's first public building in the district was on the eastern corner of Bedford Street and Delanys Road (now Canterbury Road). It was a brick school house that was erected for £300 in 1861. It was closed in 1897.

In the following century, and between the two world wars, there was a number of new buildings completed in the district. One of the earliest was St Paschal's College, a theological training monastery under the Franciscan order. The foundation stone was laid at the end of 1934 on land on the corner of Albion Road and Bedford Street, which then had a strictly rural outlook. The building was opened by Archbishop Mannix in May 1936.

Yvonne Fitzmaurice

FOOTNOTE

There are two unsubstantiated stories about the area for which I cannot find the reference.

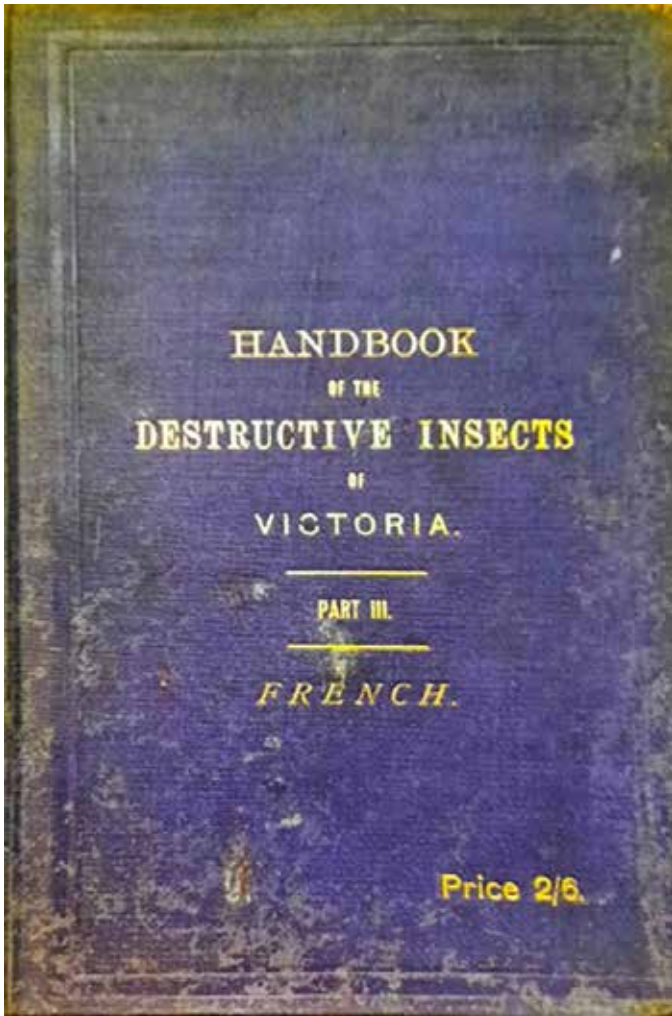
The first tells of one of the Bedford's babies, who went missing and was found happily enjoying herself in an aboriginal camp further down Gardiner's Creek.

The other concerns a circus that would rest in the area now used as football fields. It was here that an elephant was supposed to have died and been buried; other tales state that it was later removed and buried elsewhere.



Bedford Street today (opposite Bedford Heights retirement village).

What is this? (Number 3)



I was looking for something else in the bookshelves of the Whitehorse Historical Society collection when I came across a gem of a book.

It had a faded purple fabric bound cover, gold impressed printing on the cover, an early collection number and an 'open me up' look about it.

I'd recently been reading articles about not only the *varroa* mite infestation of our honeybees, but also the declining insect populations in our gardens.

Remember the beauty of the green Emperor Gum Caterpillars ("don't touch, they sting" we were warned as small children.)

The writhing colonies of black Spitfire Caterpillars the teachers told us to stay away from in the school yard. There was always a Grade 6 boy who'd prod the colony with a stick to see if they really did spit (apparently, they don't: they do, however, '... emit a greenish fluid from their mouths and a powerful odour...'). After reading this book I believe their common name is Gum Saw Fly.

The Handbook in our collection warrants a look. It is beautifully illustrated, with full-page colour plates, scientific names, detailed descriptions, and ways to 'deal with' such insects should they become agricultural pests. A treasure trove of both information and past practices. The second part of the book documents and describes Insect-destroying birds, and beautifully illustrates them.

While, of course, dated in both its language and methods, our book has fascinating descriptions of common Victorian insects circa 1900. So close, yet again so far away from our modern interactions with the natural world.

A Cataloguer

NA 463

(Above): Handbook of the Destructive Insects of Victoria, Part III, French, Price 2/6. Frontispiece advises the book contains '...notes on the methods to be adopted to check and extirpate them. Prepared by Order of the Victorian Department of Agriculture, C. French, F.L.S., F.R.H.S. Printed 1900'; (Right): One of the full-page illustrations from the book.



Norman Armstrong

(Continued from page 6)

to the formation of the Liberal Party. Norman was proud of having chaired R.G. Menzies's first public meeting in the Vermont area and the two men became friends.

The outbreak of war interrupted arguments by the State government against the establishment many small shires. By 1944 the controversy had broken out again and by March 1945 there was an increased call for severance, with Norman strongly supporting the call for city status. In the same month, the City of Nunawading was officially proclaimed, with Norman as first mayor, a position he occupied again the following year.

Norman solicited expressions of goodwill from the respective mayors of the namesake towns in the United Kingdom which were read at the ceremony proclaiming Nunawading a city. He followed this later, with visits to Blackburn and Mitcham in the UK, exchanging good wishes, local newspapers and memorabilia. A new city deserved a new coat-of-arms. Norman pushed for one which retained links with the area's British heritage and namesake links to Blackburn and Mitcham while incorporating elements unique to Nunawading. The inclusion of book and quill were an allusion to learning and culture as distinguishing features of Nunawading. Norman arranged for medals commemorating the declaration of the City to be presented in large numbers to local school children.

The story of Norman Armstrong doesn't end here. Apart from long-time membership of St. Mark's

Anglican Church in Forest Hill, (where he was Secretary and Treasurer for ten years and a Parish representative on synod for three years), He took an active role in organising the building of McKeon Memorial Hall at Vermont. Norman served 13 years as treasurer of the Mitcham-Vermont auxiliary of the Alfred Hospital. He was a committee member of the Deaf Mute Home, Blackburn and chairman for three years.

Back in 1923 Norman had become a JP and sat on the bench of Box Hill Court of Petty Sessions and the Ringwood Branch of Petty Sessions. During and after World War Two he was involved in the Mitcham and District Salvage Section and Salvage Commission.

Norman served on the committee to establish a community hospital in Mitcham, envisioned as a private institution funded by subscription and governed by a committee. In addition, he was Chairman of the Vermont Recreation Reserve Committee, Chairman of Walker Park Reserve Committee (Mitcham), President of the Vermont Football Club, Vermont Tennis Club and President of Blackburn Bowling Club. Norman was attached to the Real Estate & Stock Institute, forerunner of the REIV, and was its President in 1945-46. Norman had a long involvement with the Masonic Lodge.

Predeceased by his wife in September 1977, Norman died on 7 January 1984, aged 91, while holidaying at Warburton. His funeral was held at Le Pines, Box Hill and he was buried with Nelly in Box Hill Cemetery.

© G. Bannister 2021

DIARY DATES

Meetings are held at the Schwerkolt Cottage and Museum Complex

Saturday, 2 December
1.00pm General Meeting

Peter McPhee AM – Searching for a Hero

2024 Meetings

Saturday 3 February

Saturday 6 April

Saturday 1 June

Saturday 17 August (AGM)

Saturday 5 October

Saturday 7 December

(Speakers TBA)

2023 WORKING BEES

Please make a diary note and join us on the day. Working Bees commence at 9.30am and finish around 12 noon with morning tea.

Saturday 4 November

Please come and help even if you can only offer an hour of your time.

STATISTICS

Photographs catalogued	-	4540
Artefacts catalogued	-	5336
Documents catalogued	-	8003
Museum visitors Sept.–Oct. 2023		2073

WHS Committee Contacts

President

Vicki Jones-Evans
0404 612 216

Vice-President

Peter McPhee

Secretary

Kathy Innes

Treasurer

Eddie Tan

Local History Room (03) 9873 4946

Rear Museum Building
Schwerkolt Complex
2 – 10 Deep Creek Road, Mitcham

Newsletter Team

Chris Gray
Wendy Standfield

WHS website

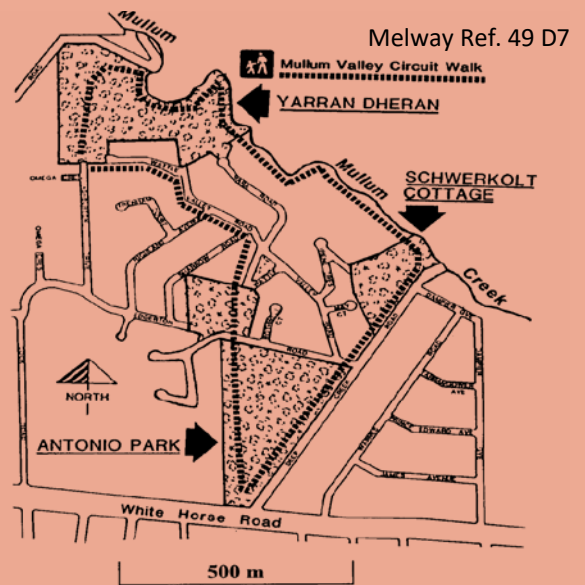
whitehorsehistory.org.au
facebook.com/whitehorsehistory

Email

whitehorsehistory@hotmail.com

Postal Address

PO Box 2092
Rangeview 3132



Copy Deadline for next WHS Newsletter: Wednesday, 10 January 2024

The Whitehorse Historical Society Inc.

Mission Statement & Acknowledgement of Country

"The purpose of the Society is to foster historical interest and knowledge. To collect, document, research, preserve and exhibit items that show how people have lived and worked in the City of Whitehorse area."

"Whitehorse Historical Society acknowledges the Wurundjeri Woi-wurrung people of the Kulin Nation as the Traditional Owners of the land. We pay our respects to their Elders past, present and emerging. Wurundjeri connection to this land dates back more than 40,000 years, and evidence of this connection still exists today."



**WHITEHORSE
CITY COUNCIL**

REMEMBER

Whitehorse Historical Society

Local History Collection

Open 10am to 3pm Wednesdays.

Visitors welcome.

Ring 9873 4946 for an appointment at other times.

Box Hill Cemetery Records & Nunawading Gazette for 1964-1974

available on microfiche for research.

**The Whitehorse
Historical Society, Inc.
acknowledges the
support of the
Whitehorse City Council.**



THE WHITEHORSE HISTORICAL SOCIETY NEWSLETTER IS PRINTED THROUGH THE COURTESY OF MICHAEL SUKKAR MP, FEDERAL MEMBER FOR DEAKIN

Sender: Whitehorse Historical Society Inc. & Schwerkolt Cottage and Museum Complex

Deep Creek Road, Mitcham, VIC 3132

If undeliverable, please return to PO Box 2092 Rangeview 3132

AFFIX
STAMP
HERE